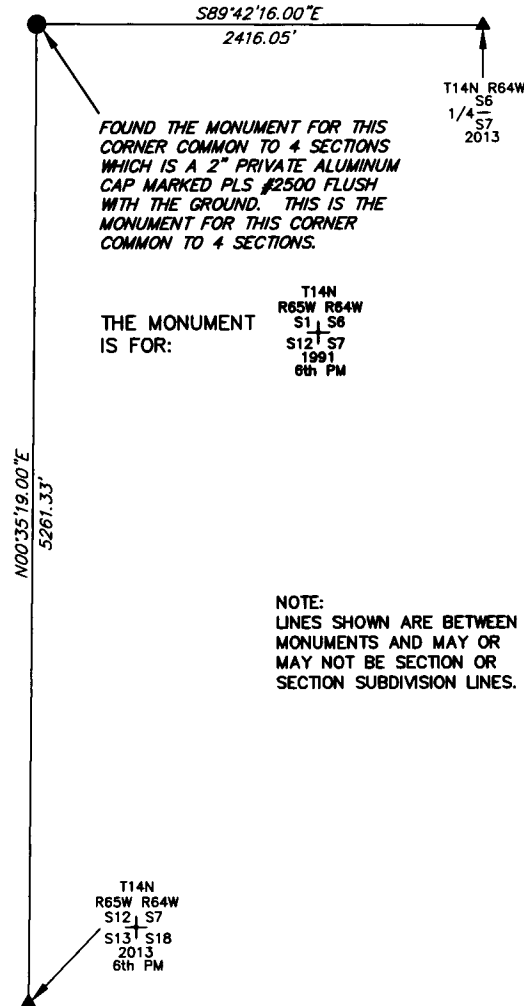


# State of Wyoming Corner Record

*CORNER PERPETUATION AND FILING ACT.*  
Regulations of the Board of Registration for Professional Engineers and Land Surveyors.)

Reverse side of this form may be used if more space is needed.

Record of original survey and citation of source of historic information (if corner is lost or obliterated). Description of corner monumentation evidence found and/or monument and accessories established to perpetuate the location of this corner. Sketch of relative location of monument, accessories, and reference points with course and distance to adjacent corner(s) (if determined in this survey). Method and rationale for reestablishment of lost or obliterated corner.



FOUND THE MONUMENT FOR THIS CORNER COMMON TO 4 SECTIONS WHICH IS A 2" PRIVATE ALUMINUM CAP MARKED PLS #2500 FLUSH WITH THE GROUND. THIS IS THE MONUMENT FOR THIS CORNER COMMON TO 4 SECTIONS.

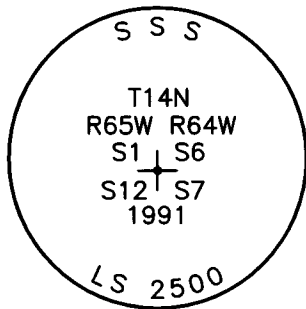
THE MONUMENT IS FOR:  
T14N R65W R64W S1 S6 S12 S7 1991 6th PM

NOTE:  
LINES SHOWN ARE BETWEEN MONUMENTS AND MAY OR MAY NOT BE SECTION OR SECTION SUBDIVISION LINES.

T14N R65W R64W S12 S7 S13 S18 2013 6th PM

↑  
N

SCALE 1"=1000'  
(EXCEPT IN TRIVIAL CASES)  
BEARINGS ARE RELATED TO WCS 84 WITH GPS OBSERVATIONS  
DRAWN BY: SM  
P.C. D. SHANKS  
COUNTY: LARAMIE



CORNER MONUMENT SYMBOLS  
● RECORD IS FOR THIS CORNER MONUMENT.  
▲ A RELATED CORNER OR WC MONUMENT.



RECP #: 658209

RECORDED 4/6/2015 AT 2:31 PM BK# 2437 PG# 928  
Debra K. Lathrop, CLERK OF LARAMIE COUNTY, WY PAGE 1 OF 1

Date of Field Work: 11/01/2013 Office Reference: \_\_\_\_\_

**CROSS INDEX DIAGRAM**

A	1	2	3	4	5	6	7	8	9	10	11	12	13	14	15	16	17	18	19	20	21	22	23	24	25
B																									
C		6		5		4		3		2															
D																									
E																									
F																									
G		7		8		9		10		11		12													
H																									
J																									
K																									
L		18		17		16		15		14		13													
M																									
N																									
O																									
P		19		20		21		22		23		24													
Q																									
R																									
S																									
T		30		29		28		27		26		25													
U																									
V																									
W																									
X		31		32		33		34		35		36													
Y																									
Z																									

Firm/Agency, Address  
 UELS, LLC  
 85 South 200 East  
 Vernal, Utah 84078  
 Telephone Number: 435-789-1017

This corner record was prepared by me or under my direction and supervision.  
 SEAL & SIGNATURE

